



www.lignes-bureau.com

Besoin d'être guidé ? **04 94 44 28 05**



designed by Dorigo Design

Des possibilités infinies !

GUEST est une gamme de banquettes modulaires sur poutres confortables et de tables d'appoint.

GUEST est conçue pour que les visiteurs puissent patienter agréablement dans une ambiance sobre et feutrée.





240

Les banquettes sur poutre GUEST sont le résultat de recherches approfondies sur le confort et la polyvalence.

Le rembourrage en mousses de polyuréthane injecté est doux et élastique, tandis que les pieds en aluminium et les doubles poutres en acier sont solides et design, combinant harmonieusement qualité des matériaux et apparence.



DESIGN LIVING



GUEST | Tissu E03/467 et structure Gris Ombre
Tables basses | laques mates Bleu Océan et Gris Soie
Banque d'accueil | laques mates Bleu Océan et Gris Soie











Avec les banquettes GUEST optimisez chaque projet d'aménagement de hall d'accueil ou de salle d'attente pour l'adapter aux espaces et aux architectures intérieures.

Ce mobilier est disponible avec différents matériaux, finitions et accessoires.





GUEST

BANQUETTE MODULABLE

FICHE TECHNIQUE GENERALE



DESCRIPTION

Système modulaire rembourré sur traverse

NOTES

Accoudoirs intérieurs en option ; table basse en option à la place de chaque assise

INFORMATIONS TECHNIQUES

STRUCTURE

Traverse tubulaire double en acier à section carrée, peinte
Structure rembourrée en multi-plis de hêtre et acier

REMBOURRAGE en polyuréthane expansé à mousse à froid

Siège : épaisseur 90 mm, densité 50 kg/m³

Dossier : épaisseur 90 mm, densité 50 kg/m³

PIEDS / CADRE / PIÈTEMENT

Pieds en aluminium moulé sous pression brillant avec pieds réglables

ACCOUDOIRS (EN OPTION)

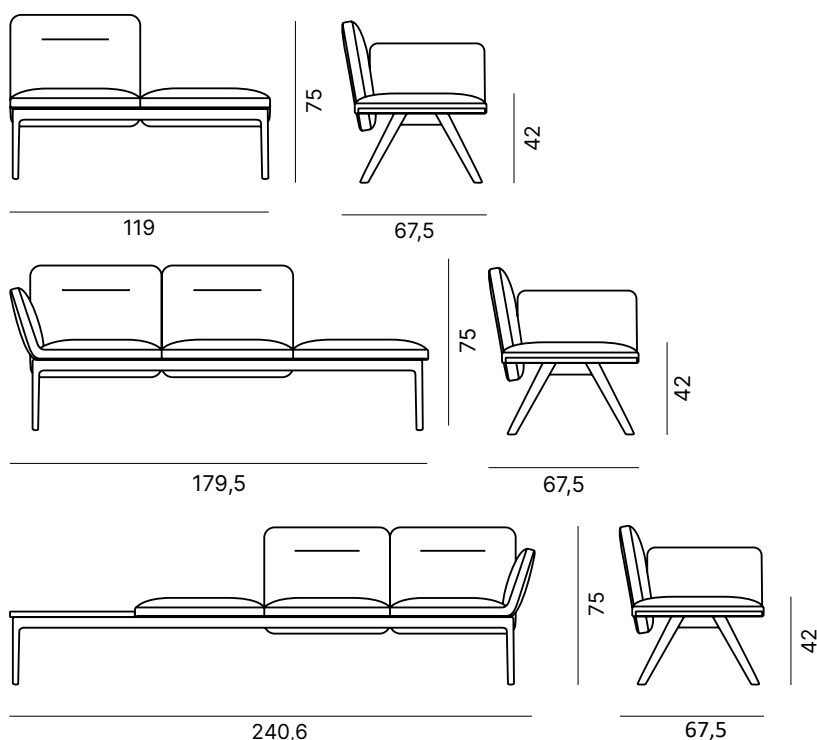
Structure en acier, rembourrage en polyuréthane expansé en bloc, épaisseur 25 mm densité 30 kg/m³

REVÊTEMENT

Catégories : B01-B03-C01-C05-D02-D03-D04-P01-E01-E02-E03-E04-I01-I02-M01-M02-M03
(voir classeur « FINISHING COLLECTION »)

DIMENSIONS

Dimensions exprimées en centimètres



B01

Pugi.rg®

Fabric

100% polyester FR - Trevira CS

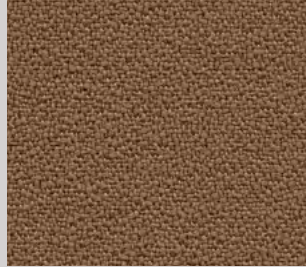
Martindale: 100.000 cycles ± 20%

Reaction to fire: EN 1021 Part 1-2 (UE), Classe 1 (IT), BS 5852 Crib 5 (UK), M1 (FR), B1 DIN 4102 (D), TB 117:2013 (USA)

OEKO-TEX®
CONFIDENCE IN TEXTILES
STANDARD 100



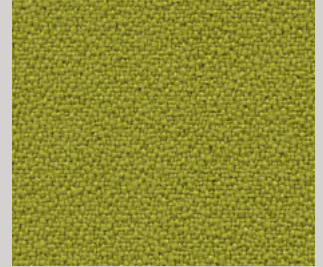
B01/009



B01/016



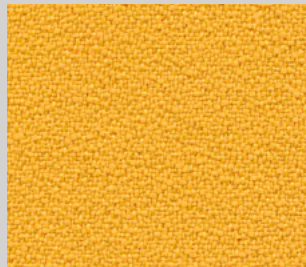
B01/027



B01/013



B01/011



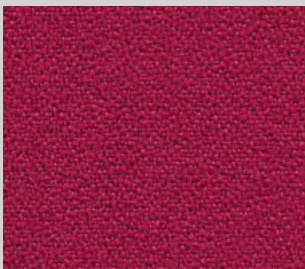
B01/010



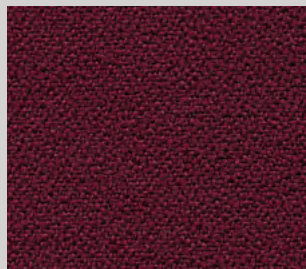
B01/017



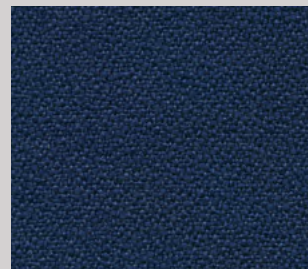
B01/018



B01/021



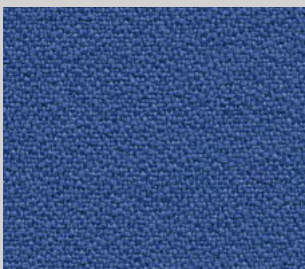
B01/024



B01/026



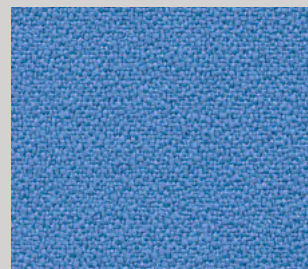
B01/023



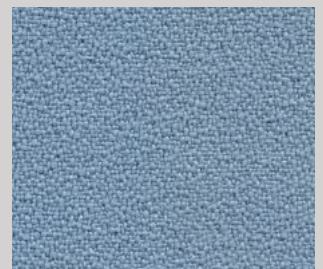
B01/025



B01/020



B01/019



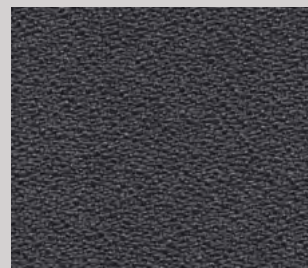
B01/014



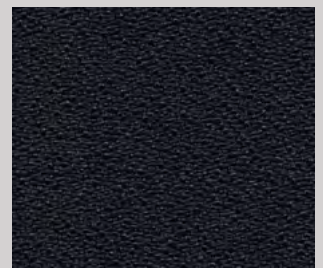
B01/012



B01/015



B01/222



B01/028

Black

Slight differences between colour batches have to be considered normal

B03



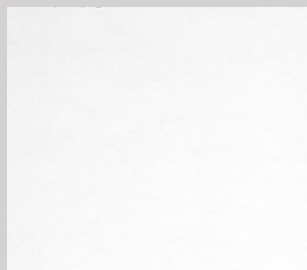
Simil leather

76% PVC - 2% polyurethane - 22% polyester

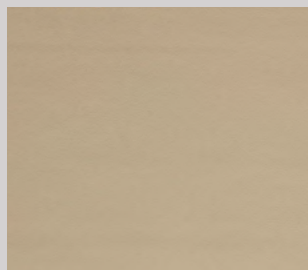
Martindale: 75.000 cycles

Reaction to fire: EN 1021 Part 1-2 (UE), Classe 1 IM (IT),

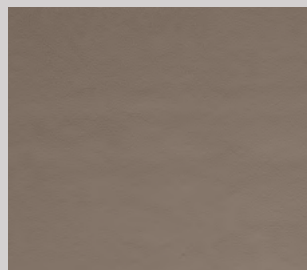
BS 5852-1:1979 Part I (UK), TB 117:2013 (USA)



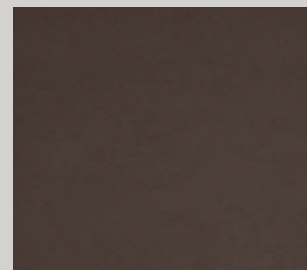
B03/141



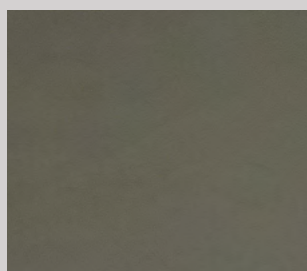
B03/181



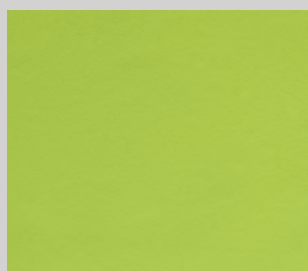
B03/185



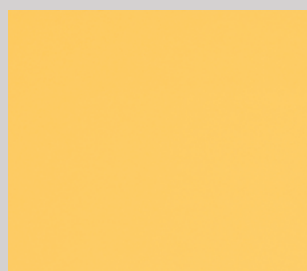
B03/183



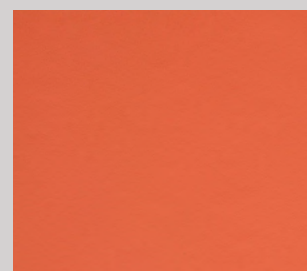
B03/177



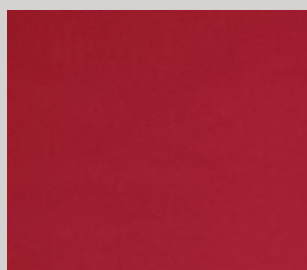
B03/175



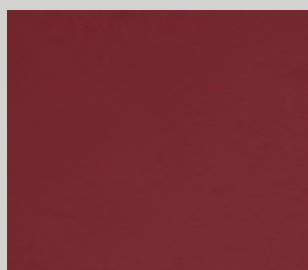
B03/169



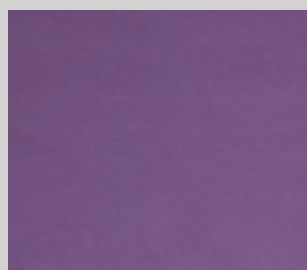
B03/176



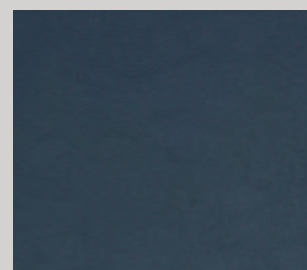
B03/179



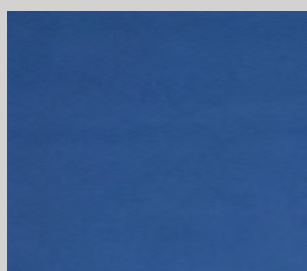
B03/186



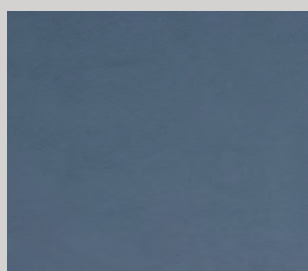
B03/187



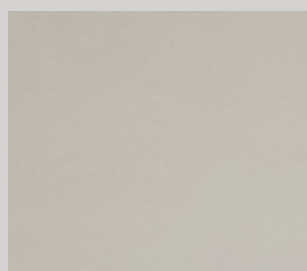
B03/180



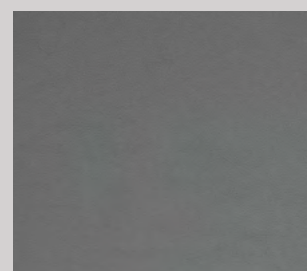
B03/182



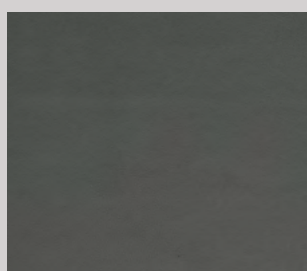
B03/178



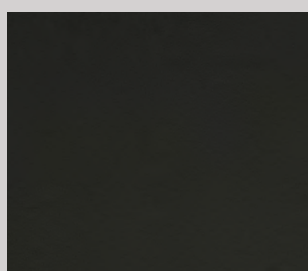
B03/170



B03/137



B03/184



B03/138

Black

C05

Gabriel®

Fabric

100% polyester FR - Trevira CS

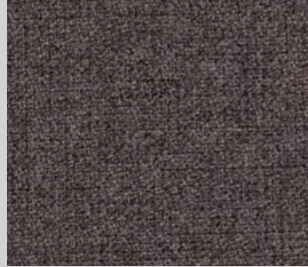
Martindale: 100.000 cycles

Reaction to fire: EN 1021 Part 1-2 (UE) M1 (FR), BS 5852 Crib 5 (UK),
Classe 1 (IT), B1 DIN 4102 (D), TB 117:2013 (USA)

OEKO-TEX®
CONFIDENCE IN TEXTILES
STANDARD 100



C05/280



C05/281



C05/285



C05/287



C05/303



C05/295



C05/302



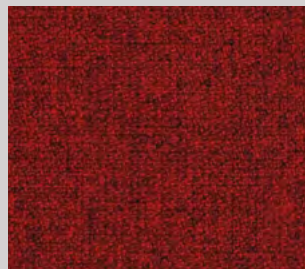
C05/282



C05/284



C05/286



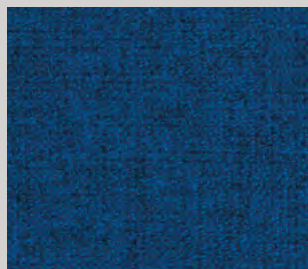
C05/289



C05/288



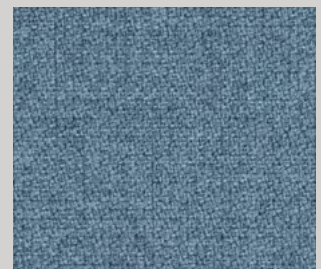
C05/294



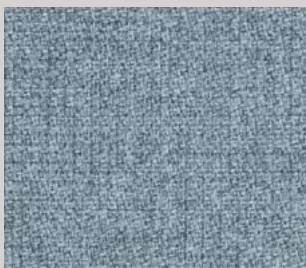
C05/292



C05/293



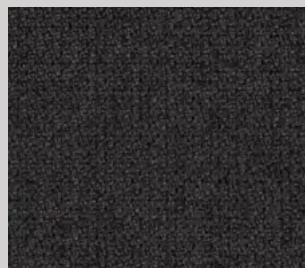
C05/290



C05/291



C05/279



C05/283

Slight differences between colour batches have to be considered normal

D02

Pugi•rg®

Fabric

100% polyester FR - Trevira CS

Martindale: 100.000 cycles ± 20%

Reaction to fire: EN 1021 Part 1-2 (UE), M1 (FR), BS 5852 Crib 5 (UK),
Classe 1 (IT), B1 DIN 4102 (D), TB 117:2013 (USA)

OEKO-TEX®
CONFIDENCE IN TEXTILES
STANDARD 100



D02/268



D02/271



D02/276



D02/278



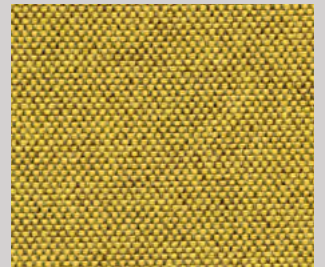
D02/326



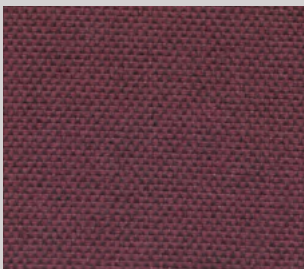
D02/269



D02/341



D02/267



D02/277



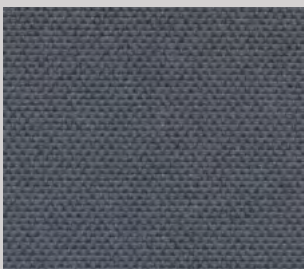
D02/274



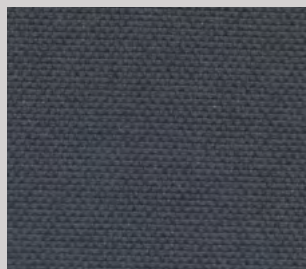
D02/272



D02/270



D02/273



D02/275

D03

 Pugi.rg®

Fabric

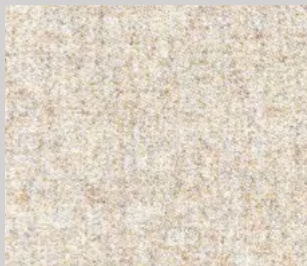
75% wool - 25% polyester

Martindale: 100.000 cycles ± 20%

Reaction to fire: EN 1021 Part 1-2 (UE), M1 (FR), BS 5852 Crib 5 (UK),

Classe 1 (IT), TB 117:2013 (USA)

OEKO-TEX®
CONFIDENCE IN TEXTILES
STANDARD 100



D03/363



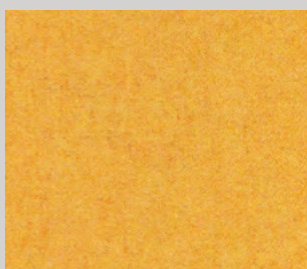
D03/375



D03/370



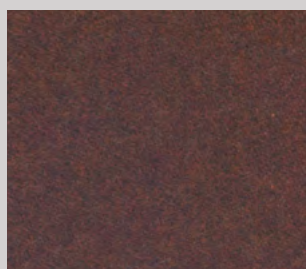
D03/367



D03/365



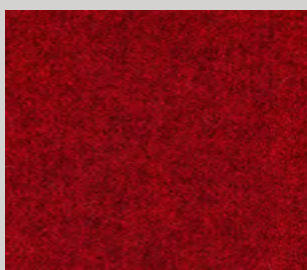
D03/372



D03/377



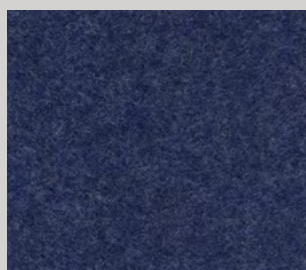
D03/381



D03/378



D03/366



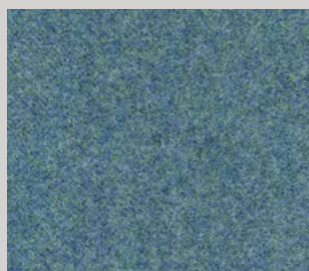
D03/380



D03/369



D03/373



D03/368



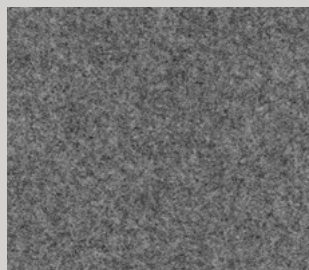
D03/371



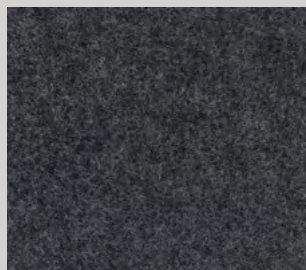
D03/364



D03/374



D03/376



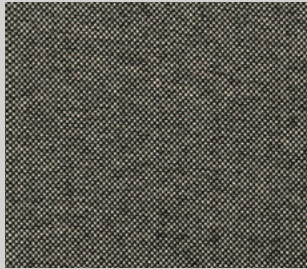
D03/379

Slight differences between colour batches have to be considered normal

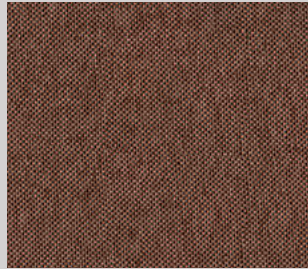
D05

camira

Fabric
100% REPREVE® recycled polyester made from used plastic bottles
Martindale: ≥80.000 cycles
Reaction to fire: EN 1021 Part 1-2 (UE), BS 7176 Low and Medium Hazard (UK),
NFPA 260 + UFAC Class1 (USA), TB 117:2013 (USA)



D05/413



D05/407



D05/404



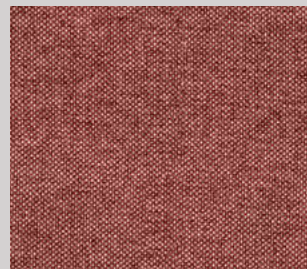
D05/405



D05/406



D05/402



D05/403



D05/409



D05/415



D05/412



D05/408



D05/410



D05/411



D05/414



D05/416

E01

Gabriel

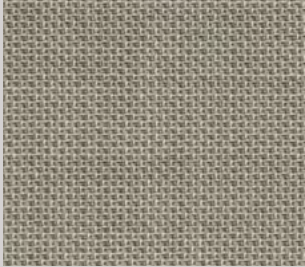
Fabric

85% New Zealand wool - 15% polyamide

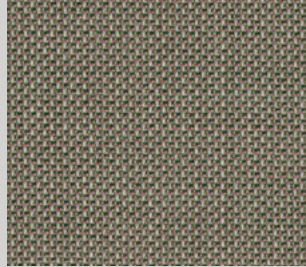
Martindale: 200.000 cycles

Reaction to fire: EN 1021 Part 1-2 (UE), M1 (FR), BS 5852 Crib 5 (UK),
TB 117:2013 (USA)

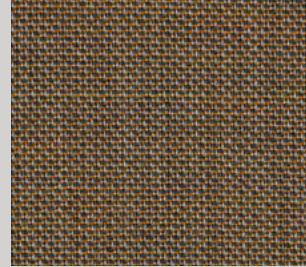
OEKO-TEX®
CONFIDENCE IN TEXTILES
STANDARD 100



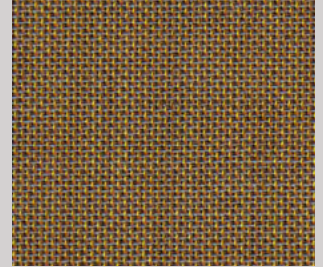
E01/417



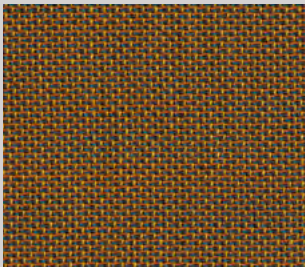
E01/427



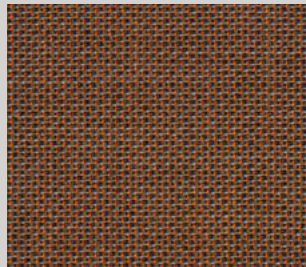
E01/418



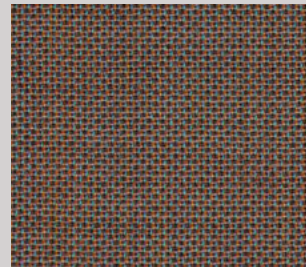
E01/419



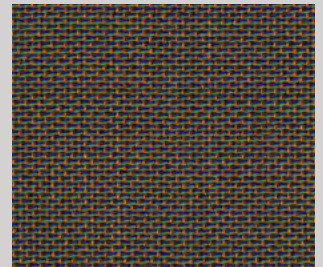
E01/422



E01/424



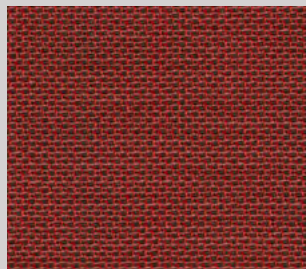
E01/428



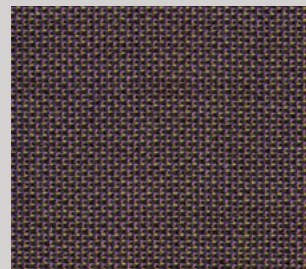
E01/435



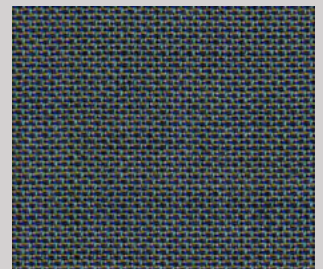
E01/425



E01/423



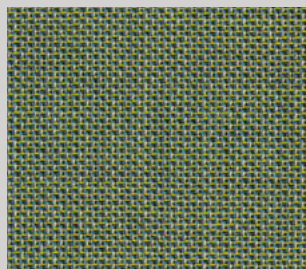
E01/426



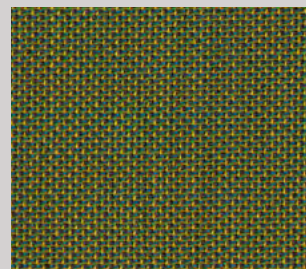
E01/429



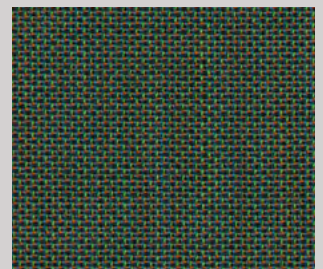
E01/430



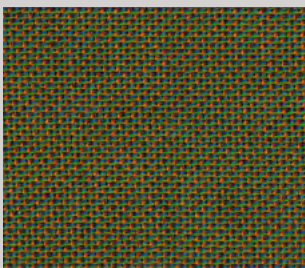
E01/431



E01/432



E01/433



E01/434



E01/421



E01/420

Slight differences between colour batches have to be considered normal

P01

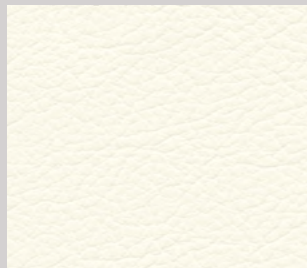
GIVIPPELL

Leather

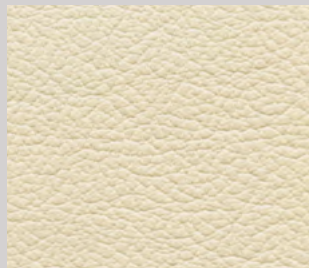
Animal origin: European raw hides

Chrome tanning, aniline dyeing, water pigments finishing.

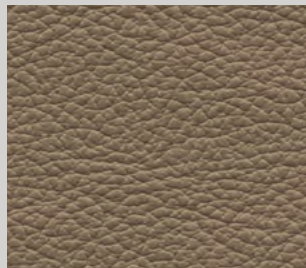
Reaction to fire: EN 1021 Part 1-2 (UE), TB 117:2013 (USA)



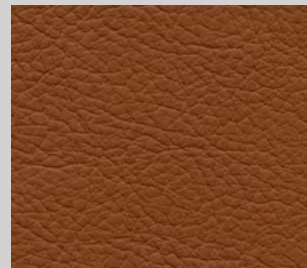
P01/093



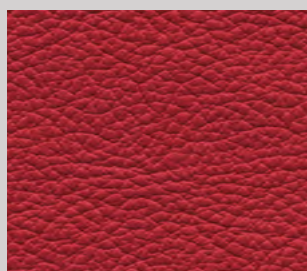
P01/098



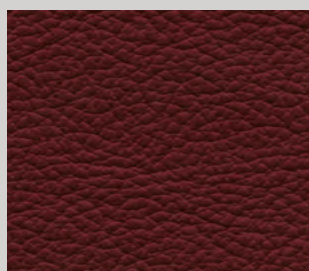
P01/296



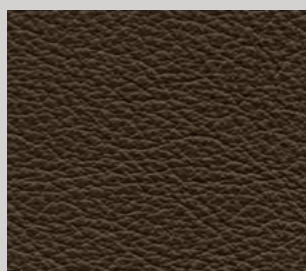
P01/096



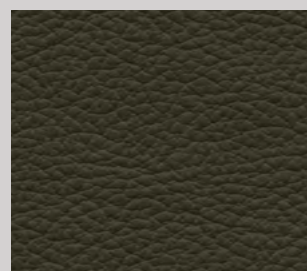
P01/097



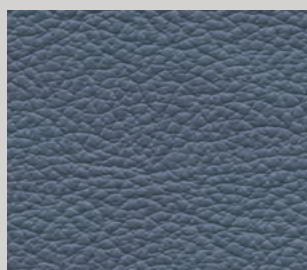
P01/257



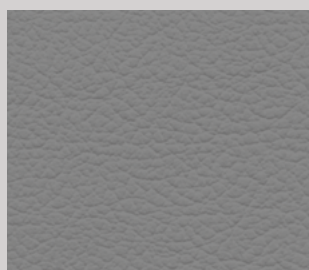
P01/095



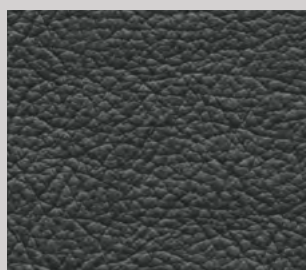
P01/627



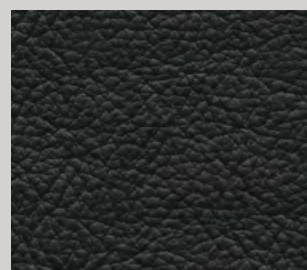
P01/626



P01/145



P01/172



P01/092

Black

Melamine



EC Eucalyptus



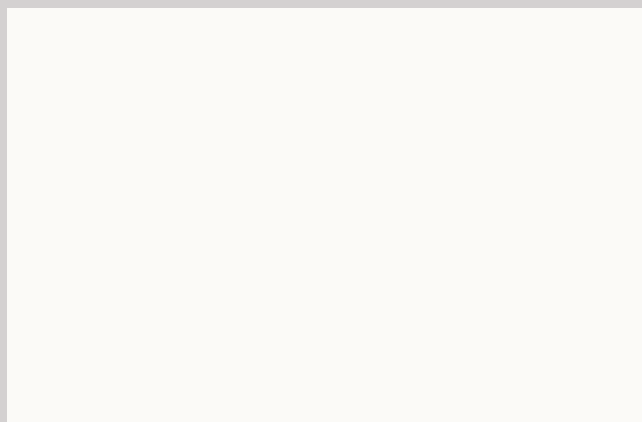
OL Elm



NO Canaletto Walnut



RK Oak



BA White



CL Concrete

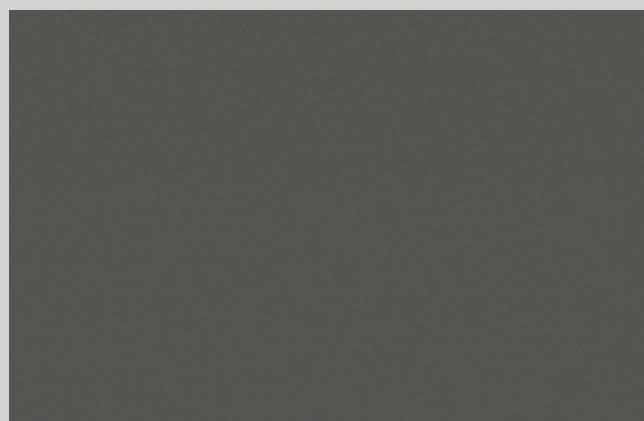


www.lignes-bureau.com

Metal



AL Silver



VO Umbra Grey

Besoin d'être guidé ? **04 94 44 28 05**



www.lignes-bureau.com

D'autres collections de tissus et des laques mates sont disponibles sur demande.

Nous vous invitons à nous consulter à ce sujet.

Besoin d'être guidé ? **04 94 44 28 05**